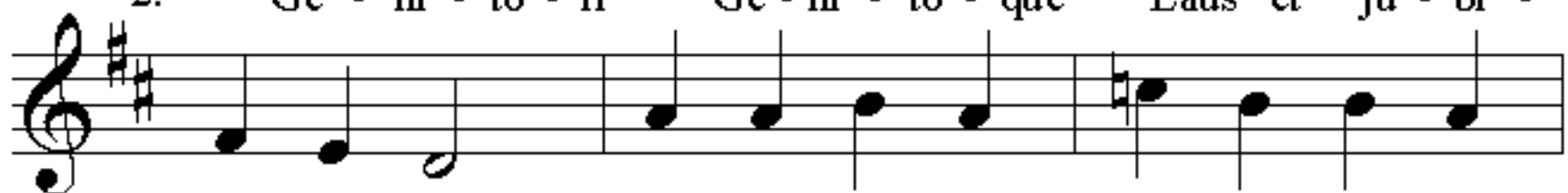


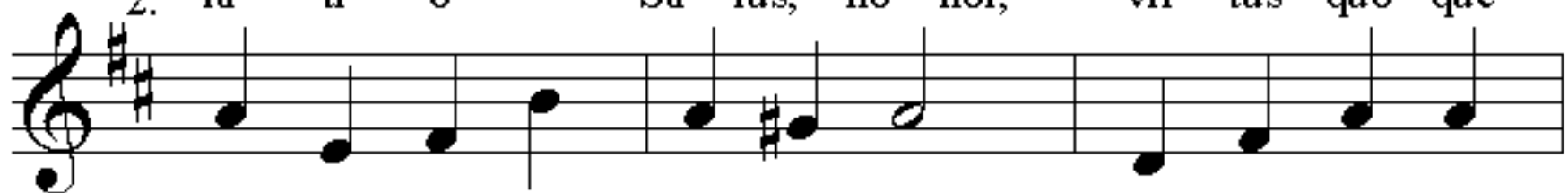
Tantum Ergo



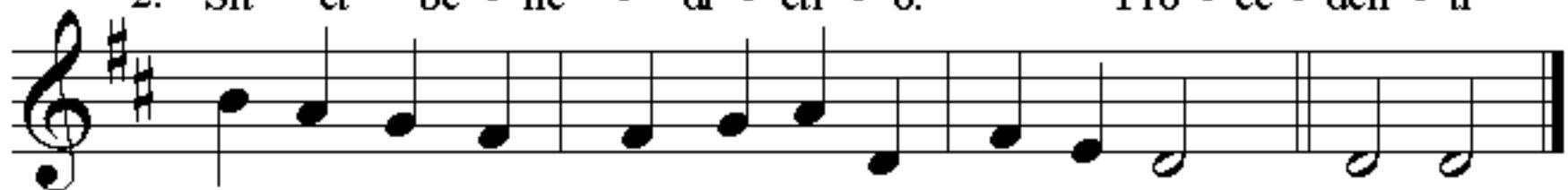
1. Tan - tum er - go Sa - cra - men - tum Ve - ne - re - mur
2. Ge - ni - to - ri Ge - ni - to - que Laus et ju - bi -



1. cer - nu - i, Et an - ti - quum do - cu - men - tum
2. la - ti - o Sa - lus, ho - nor, vir - tus quo - que



1. No - vo ce - dat ri - tu - i. Prae - stet fi - des
2. Sit et be - ne - di - cti - o. Pro - ce - den - ti



1. sup - ple - men - tum Sen - su - um de - fe - ctu - i.
2. ab u - tro - que Com - par sit lau - da - ti - o. A - men.